

Summary of Local COVID-19 Situation

Figure 1: Number of Community Unlinked and Linked Cases<sup>1</sup>

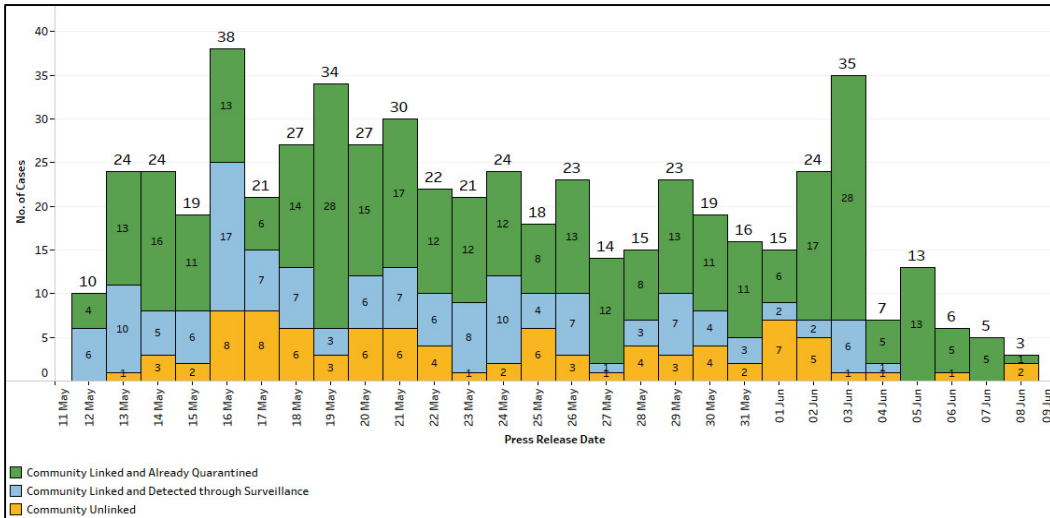
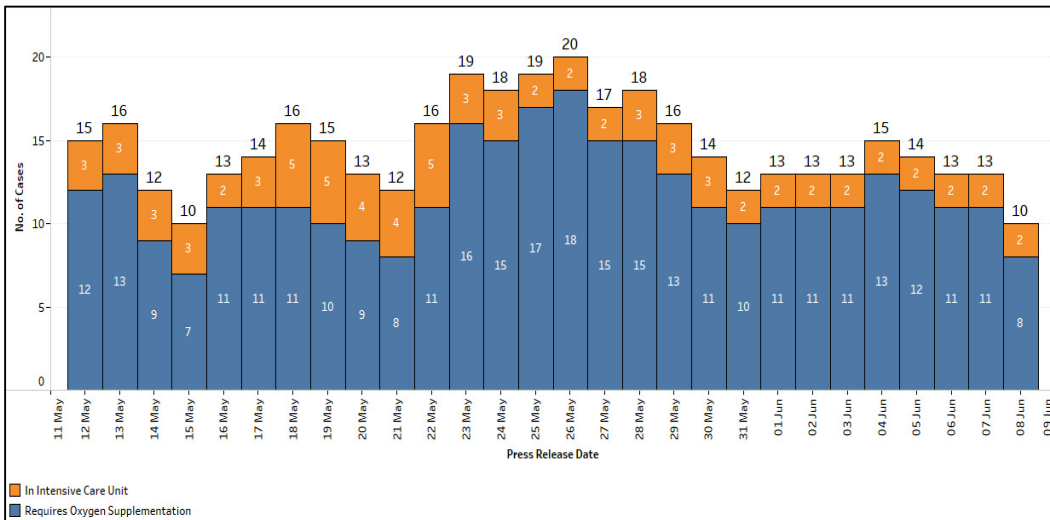
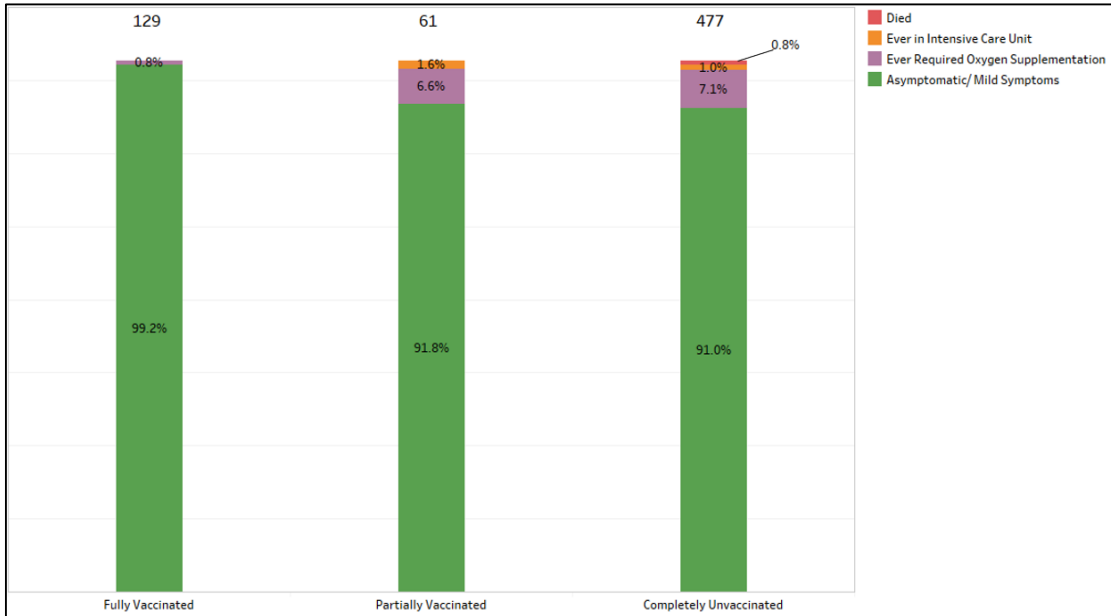


Figure 2: Number of Active Cases in Intensive Care Unit or Requiring Oxygen Supplementation

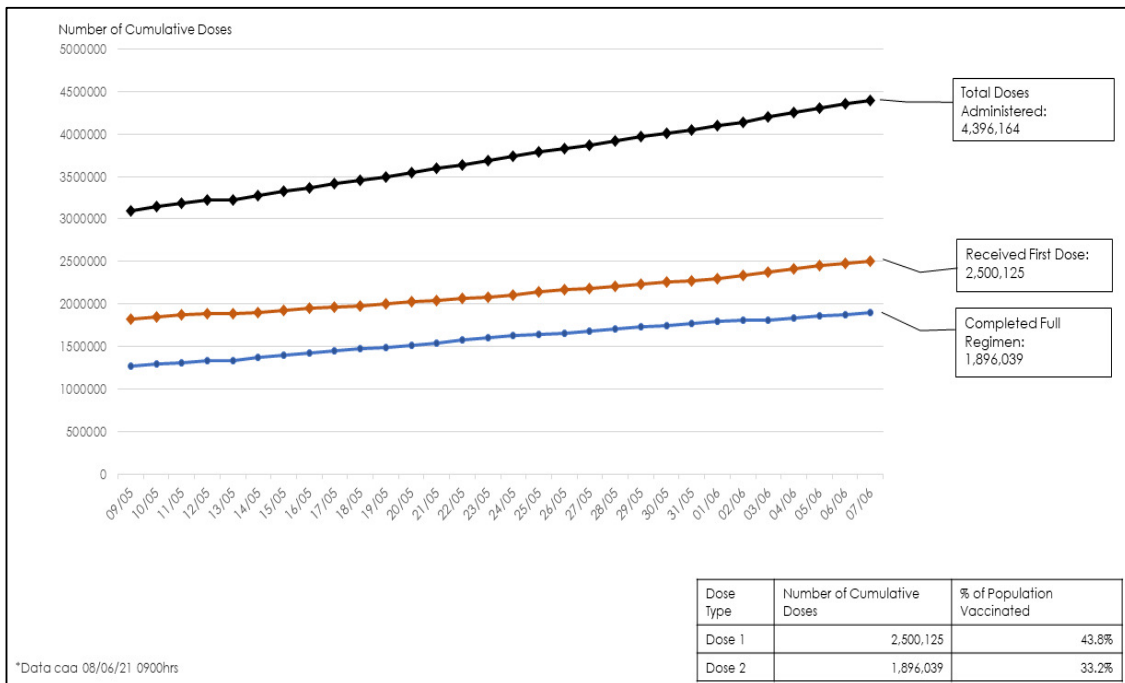


<sup>1</sup> Incorporates re-classifications of earlier reported cases.

**Figure 3: Breakdown of Local Cases Since 28 April by Vaccination Status and Severity of Condition<sup>2</sup>**



**Figure 4: Progress of Vaccination Programme (as of 7 June 2021)**



<sup>2</sup> Fully vaccinated – more than 14 days after completing vaccination regimen. Partially vaccinated – received 1 dose only of 2-dose vaccine or COVID-19 positive within 14 days of completing vaccination regimen.

**Open Clusters**

Epidemiological investigations and contact tracing have uncovered links between cases.

- i. 33 of the confirmed cases (Cases 63924, 63949, 63950, 63961, 63962, 63974, 63976, 63977, 63979, 63980, 63982, 63983, 63984, 63985, 63986, 63987, 63988, 63989, 63990, 63991, 63992, 63993, 63994, 63995, 63996, 63997, 64001, 64060, 64061, 64062, 64090, 64094 and 64108) are linked to the MINDSville@Napiri cluster with the most recent case (Case 64108) linked to the cluster on 7 June. Case 63924 is a 37 year-old female Singaporean who is a resident at MINDSville@Napiri. She was confirmed to have COVID-19 infection on 31 May.
- ii. 8 of the confirmed cases (Cases 63936, 63969, 64046, 64048, 64049, 64057, 64091 and 64093) are linked to the Atatcutz Singapore cluster, with the most recent cases (Case 64091) linked to the cluster on 6 June, and Case 64093 linked to the cluster on 7 June. Case 63936 is a 26 year-old male Malaysia national who works as a delivery rider for Pizza Hut (Hougang Green). He was confirmed to have COVID-19 infection on 1 June.
- iii. 6 of the confirmed cases (Cases 63964, 63981, 64010, 64011, 64059 and 64103) are linked to the Case 63964 cluster with the most recent case (Case 64103) linked to the cluster on 7 June. Case 63964 is a 61 year-old female Singaporean who works at NTUC FairPrice (Clementi Avenue 3). She was confirmed to have COVID-19 infection on 1 June.
- iv. 3 of the confirmed cases (Cases 63931, 64020 and 64077) are linked to the Case 63931 cluster, with the most recent case (Case 64077) linked to the cluster on 5 June. Case 63931 is an 82 year-old male Singaporean who is a retiree. He was confirmed to have COVID-19 infection on 1 June.
- v. 23 of the confirmed cases (Cases 63534, 63535, 63569, 63603, 63624, 63629, 63668, 63669, 63676, 63682, 63694, 63713, 63717, 63726, 63732, 63791, 63793, 63796, 63834, 63871, 64016, 64056 and 64079) are linked to the McDonald's delivery riders cluster with the most recent case (Case 64079) linked to the cluster on 6 June. Case 63534 is a 27 year-old male Malaysia national who works as a delivery rider for IVIC Logistic Pte Ltd and McDonald's (Bedok Reservoir). He was confirmed to have COVID-19 infection on 20 May.
- vi. 7 of the confirmed cases (Cases 63721, 63748, 63752, 63933, 64050, 64065 and 64066) are linked to the Tektronix cluster with the most recent cases (Cases 64065 and 64066) linked to the cluster on 5 June. Case 63721 is a 50 year-old male Singaporean who works as an engineer at Tektronix Southeast Asia Pte Ltd. He was confirmed to have COVID-19 infection on 24 May.
- vii. 12 of the confirmed cases (Cases 63853, 63854, 63874, 63883, 63884, 63885, 63886, 63896, 63903, 63958, 64009 and 64076) are linked to the NTUC Foodfare (308 Anchorvale Road) cluster with the most recent case (Case 64076) linked to the cluster on 5 June. Case 63853 is a 33 year-old male Malaysia national who works as a kitchen assistant at Hua Zai Eating House Pte Ltd. He was confirmed to have COVID-19 infection on 29 May.
- viii. 4 of the confirmed cases (Cases 63127, 63147, 63377 and 63379) are linked to the White Sands cluster. Case 63127 is a 43 year-old female Myanmar national who is a foreign domestic worker. She was confirmed to have COVID-19 infection on 12 May.
- ix. 7 of the confirmed cases (Cases 63714, 63747, 63794, 63909, 64022, 64052 and 64064) are linked to the Case 63714 cluster with the most recent cases (Case 64052) linked to

the cluster on 4 June, and Case 64064 linked to the cluster on 5 June. Case 63714 is a 74 year-old male Singaporean who is a retiree. He was confirmed to have COVID-19 infection on 24 May.

- x. 5 of the confirmed cases (Cases 63922, 63927, 64024, 64205 and 64047) are linked to the Case 63922 cluster with the most recent case (Case 64047) linked to the cluster on 4 June. Case 63922 is a 56 year-old female Singaporean who is a homemaker. She was confirmed to have COVID-19 infection on 31 May.
- xi. 3 of the confirmed cases (Cases 63892, 64027 and 64028) are linked to the Case 63892 cluster with the most recent cases (Cases 64027 and 64028) linked to the cluster on 3 June. Case 63892 is a 68 year-old male Singaporean who works as a manager at Phoenix Entertainment Karaoke TV Music Lounge Pte Ltd. He was confirmed to have COVID-19 infection on 30 May.
- xii. 27 of the confirmed cases (Cases 63507, 63677, 63740, 63760, 63761, 63765, 63798, 63799, 63802, 63830, 63831, 63832, 63836, 63837, 63839, 63842, 63843, 63898, 63905, 63906, 63907, 63929, 63952, 63953, 63970, 64026 and 64032) are linked to the Hong Ye Group cleaners cluster with the most recent cases (Cases 64026 and 64032) linked to the cluster on 3 June. Case 63507 is a 31 year-old male Singaporean who is employed by Hong Ye Group Pte Ltd as a cleaner at Changi Business Park. He was confirmed to have COVID-19 infection on 19 May.
- xiii. 13 of the confirmed cases (Cases 63286, 63292, 63392, 63455, 63456, 63517, 63601, 63609, 63757, 63862, 63863, 63864 and 63999) are linked to the 506 Hougang Avenue 8 cluster with the most recent case (Case 63999) linked to the cluster on 1 June. Case 63286 is a 57 year-old female Malaysia national who is currently unemployed. She was confirmed to have COVID-19 infection on 15 May.
- xiv. 3 of the confirmed cases (Cases 63973, 63975 and 63978) are linked to the Case 63973 cluster with the most recent cases (Cases 63975 and 63978) linked to the cluster on 2 June. Case 63973 is an 80 year-old female Singaporean who is a retiree. She was confirmed to have COVID-19 infection on 1 June.
- xv. 7 of the confirmed cases (Cases 63887, 63908, 63920, 63928, 63940, 63947 and 63998) are linked to the Case 63887 cluster with the most recent case (Case 63998) linked to the cluster on 2 June. Case 63887 is a 65 year-old female Singaporean who is a homemaker. She was confirmed to have COVID-19 infection on 30 May.
- xvi. 4 of the confirmed cases (Cases 63941, 63963, 63966 and 64000) are linked to the Case 63941 cluster with the most recent case (Case 64000) linked to the cluster on 2 June. Case 63941 is a 36 year-old female Vietnam national who is a homemaker. She was confirmed to have COVID-19 infection on 1 June.
- xvii. 15 of the confirmed cases (Cases 63160, 63253, 63294, 63300, 63426, 63427, 63428, 63491, 63522, 63526, 63680, 63731, 63751, 63826 and 63943) are linked to the Changi Prison Complex cluster, with the most recent case (Case 63943) linked to the cluster on 1 June. Case 63160 is a 39 year-old male China national who is employed by SATS Food Services Pte Ltd as a chef at Changi Prison Complex. He was confirmed to have COVID-19 infection on 13 May.
- xviii. 10 of the confirmed cases (Cases 63806, 63827, 63847, 63848, 63875, 63876, 63951, 63954, 63955 and 63968) are linked to the Case 63806 cluster with the most recent cases (Cases 63951, 63954 and 63955) linked to the cluster on 1 June, and Case 63968 linked to the cluster on 2 June. Case 63806 is a 49 year-old male Singapore Permanent Resident

who works as a manager at Success Consultancy Pte Ltd. He was confirmed to have COVID-19 infection on 28 May.

- xix. 7 of the confirmed cases (Cases 63725, 63742, 63775, 63777, 63846, 63881 and 63960) are linked to the Chevy's Bar and Bistro cluster with the most recent case (Case 63960) linked to the cluster on 1 June. Case 63725 is a 58 year-old female Singaporean who works at Chevy's Bar and Bistro. She was confirmed to have COVID-19 infection on 25 May.
- xx. 3 of the confirmed cases (Cases 63399, 63900 and 63917) are linked to the Case 63399 cluster with the most recent case (Case 63917) linked to the cluster on 31 May. Case 63399 is a 35 year-old male Malaysia national who is a kitchen crew at Kota Zheng Zong Bak Kut Teh (Serangoon Gardens). He was confirmed to have COVID-19 infection on 17 May.
- xxi. 3 of the confirmed cases (Cases 63743, 63859 and 63938) are linked to the Case 63743 cluster with the most recent case (Case 63938) linked to the cluster on 1 June. Case 63743 is a 24 year-old male Malaysia national who works at McDonald's (The Woodgrove). He was confirmed to have COVID-19 infection on 26 May.
- xxii. 7 of the confirmed cases (Case 63660, 63661, 63701, 63702, 63703, 63904 and 63923) are linked to Case 63660 cluster with the most recent case (Case 63923) linked to the cluster on 31 May. Case 63660 is a 31 year-old male Singaporean who works as a property agent with ERA Realty Network Pte Ltd. He was confirmed to have COVID-19 infection on 23 May.
- xxiii. 3 of the confirmed cases (Cases 63844, 63890 and 63899) are linked to Case 63844 cluster with the most recent cases (Case 63890 and 63899) linked to the cluster on 30 May. Case 63844 is a 49 year-old female Singaporean who works as executive at Eng Soon Chair & Table Hire Service. She was confirmed to have COVID-19 infection on 28 May.
- xxiv. 6 of the confirmed cases (Cases 63708, 63709, 63746, 63756, 63894 and 63895) are linked to the Case 63708 cluster with the most recent cases (Cases 63894 and 63895) linked to the cluster on 30 May. Case 63708 is a 15 year-old male Singaporean who is a student at Westwood Secondary School. He was confirmed to have COVID-19 infection on 24 May.
- xxv. 63 of the confirmed cases (Cases 62933, 63037, 63273, 63275, 63276, 63277, 63304, 63306, 63318, 63357, 63363, 63381, 63393, 63406, 63408, 63417, 63448, 63453, 63462, 63463, 63469, 63470, 63471, 63472, 63488, 63508, 63509, 63510, 63520, 63524, 63559, 63560, 63570, 63571, 63577, 63578, 63588, 63591, 63593, 63597, 63598, 63600, 63606, 63607, 63620, 63652, 63653, 63664, 63665, 63675, 63678, 63704, 63707, 63722, 63724, 63728, 63729, 63733, 63734, 63735, 63829, 63849 and 63882) are linked to the JEM/ Westgate cluster with the most recent case (Case 63882) linked to the cluster on 30 May. Case 62933 is a 53 year-old female Singaporean who works as a cleaner at Park Avenue Rochester. She was confirmed to have COVID-19 infection on 7 May.
- xxvi. 5 of the confirmed cases (Cases 63446, 63656, 63773, 63866 and 63867) are linked to the Case 63446 cluster with the most recent cases (Cases 63866 and 63867) linked to the cluster on 29 May. Case 63446 is a 28 year-old male Singaporean who works as an engineer at Patec Pte Ltd. He was confirmed to have COVID-19 infection on 18 May.
- xxvii. 6 of the confirmed cases (Cases 63319, 63434, 63435, 63436, 63860 and 63861) are linked to the Case 63319 cluster, with the most recent cases (Cases 63860 and 63861)

- linked to the cluster on 29 May. Case 63319 is a 77 year-old female Singaporean who is a homemaker. She was confirmed to have COVID-19 infection on 15 May.
- xxviii. 3 of the confirmed cases (Cases 63466, 63618 and 63804) are linked to the Case 63466 cluster with the most recent case (Case 63804) linked to the cluster on 27 May. Case 63466 is a 59 year-old female Singaporean who works at Mary Fashion and Trading. She was confirmed to have COVID-19 infection on 19 May.
- xxix. 7 of the confirmed cases (Cases 63335, 63460, 63523, 63579, 63758, 63759 and 63762) are linked to the Pacific Law Corporation cluster with the most recent cases (Case 63758, 63759 and 63762) linked to the cluster on 26 May. Case 63335 is a 57 year-old female Singaporean who works as an administrative personnel at Pacific Law Corporation. She was confirmed to have COVID-19 infection on 16 May.
- xxx. 4 of the confirmed cases (Cases 63515, 63612, 63654 and 63741) are linked to the Case 63515 cluster with the most recent case (Case 63741) linked to the cluster on 25 May. Case 63515 is a 34 year-old male Singaporean who works as a technician at Singapore Refining Company Pte Ltd. He was confirmed to have COVID-19 infection on 20 May.
- xxxi. 5 of the confirmed cases (Case 63622, 63696, 63697, 63698, and 63723) are linked to the Harvest @ Woodlands dormitory cluster with the most recent case (Case 63723) linked to the cluster on 24 May. Case 63622 is a 46 year-old male Malaysia national who works as a construction worker at H&W Communications Pte Ltd. He was confirmed to have COVID-19 infection on 22 May.
- xxxii. 32 of the confirmed cases (Cases 63131, 63184, 63185, 63186, 63187, 63188, 63251, 63259, 63268, 63279, 63281, 63282, 63285, 63288, 63296, 63297, 63298, 63325, 63337, 63353, 63386, 63390, 63391, 63400, 63422, 63424, 63438, 63481, 63663, 63667, 63706 and 63736) are linked to the Learning Point cluster, with the most recent case (Case 63736) linked to the cluster on 25 May. Case 63131 is a 50 year-old female Singaporean who works as a tutor at Learning Point. She was confirmed to have COVID-19 infection on 12 May.
- xxxiii. 8 of the confirmed cases (Cases 63236, 63349, 63370, 63421, 63506, 63621, 63641 and 63727) are linked to the Case 63236 cluster, with the most recent case (Case 63727) linked to the cluster on 25 May. Case 63236 is a 53 year-old male Singaporean who works as a personal chauffeur. He was confirmed to have COVID-19 infection on 14 May.
- xxxiv. 7 of the confirmed cases (Cases 63317, 63320, 63350, 63439, 63610, 63679 and 63739) are linked to the Marina Bay Sands Casino dealer cluster, with the most recent case (Case 63739) linked to the cluster on 25 May. Case 63317 is a 36 year-old male Malaysia national who works as a dealer at Marina Bay Sands Casino. He was confirmed to have COVID-19 infection on 16 May.
- xxxv. 3 of the confirmed cases (Cases 63543, 63551 and 63700) are linked to Case 63543 cluster with the most recent case (Case 63700) linked to the cluster on 24 May. Case 63543 is a 40 year-old male Singaporean who works as an operations personnel at The Meatery SG. He was confirmed to have COVID-19 infection on 21 May.
- xxxvi. 6 of the confirmed cases (Cases 63479, 63485, 63533, 63592, 63627 and 63699) are linked to the Case 63479 cluster with the most recent case (Case 63699) linked to the cluster on 23 May. Case 63479 is a 49 year-old female Singapore Permanent Resident who is a homemaker. She was confirmed to have COVID-19 infection on 20 May.

- xxxvii. 4 of the confirmed cases (Case 63376, 63476, 63537 and 63681) are linked to Case 63376 cluster with the most recent case (Case 63681) linked to the cluster on 24 May. Case 63376 is a 46 year-old female Singaporean who is an investment banker at DBS. She was confirmed to have COVID-19 infection on 17 May.
- xxxviii. 108 of the confirmed cases (Cases 62873, 62940, 62941, 62942, 62945, 62971, 62972, 62998, 63005, 63015, 63026, 63047, 63055, 63059, 63060, 63061, 63070, 63071, 63072, 63074, 63084, 63091, 63094, 63095, 63096, 63097, 63098, 63100, 63109, 63115, 63117, 63118, 63119, 63120, 63122, 63125, 63126, 63128, 63129, 63132, 63135, 63136, 63138, 63139, 63140, 63141, 63146, 63148, 63149, 63150, 63165, 63167, 63169, 63177, 63178, 63179, 63180, 63181, 63191, 63192, 63194, 63195, 63219, 63221, 63235, 63238, 63239, 63240, 63242, 63243, 63252, 63255, 63256, 63257, 63269, 63270, 63291, 63305, 63316, 63324, 63343, 63344, 63346, 63347, 63351, 63382, 63387, 63389, 63416, 63423, 63431, 63444, 63445, 63447, 63452, 63458, 63459, 63464, 63473, 63474, 63518, 63519, 63528, 63553, 63586, 63605, 63615 and 63616) are linked to the Changi Airport Terminal 3 cluster, with the most recent cases (Cases 63605, 63615 and 63616) linked to the cluster on 22 May. Case 62873 is an 88 year-old male Singaporean who is employed by Ramky Cleantech Services Pte Ltd as a cleaner deployed at Changi Airport Terminal 3. He was confirmed to have COVID-19 infection on 5 May.
- xxxix. 3 of the confirmed cases (Cases 63290, 63383 and 63384) are linked to the Case 63290 cluster, with the most recent cases (Cases 63383 and 63384) linked to the cluster on 17 May. Case 63290 is a 64 year-old female Singapore Permanent Resident who is currently unemployed. She was confirmed to have COVID-19 infection on 15 May.
- xl. 3 of the confirmed cases (Cases 63414, 63584 and 63585) are linked to the Case 63414 cluster with the most recent cases (Cases 63584 and 63585) linked to the cluster on 21 May. Case 63414 is a 40 year-old male Singaporean who works as a vending machine loader at Warburg Pte Ltd, and a food delivery rider for Deliveroo and Grab. He was confirmed to have COVID-19 infection on 18 May.
- xli. 3 of the confirmed cases (Cases 63513, 63516 and 63572) are linked to the Case 63516 cluster with the most recent case (Case 63572) linked to the cluster on 21 May. Case 63516 is a 28 year-old female Singaporean who is a homemaker. She was confirmed to have COVID-19 infection on 20 May.
- xlii. 3 of the confirmed cases (Cases 63487, 63574 and 63581) are linked to the Case 63487 cluster with the most recent cases (Cases 63574 and 63581) linked to the cluster on 21 May. Case 63487 is a 19 year-old female Malaysia national who is a student at Singapore Polytechnic. She was confirmed to have COVID-19 infection on 19 May.
- xliii. 9 of the confirmed cases (Cases 63271, 63278, 63412, 63425, 63442, 63461, 63468, 63477 and 63511) are linked to the Jin Tai Tong Food Industries cluster, with the most recent case (Case 63511) linked to the cluster on 20 May. Case 63271 is a 55 year-old male Singaporean who works as a warehouse assistant at Jin Tai Mart. He was confirmed to have COVID-19 infection on 15 May.
- xliv. 3 of the confirmed cases (Cases 63336, 63388 and 63440) are linked to the Case 63336 cluster, with the most recent case (Case 63440) linked to the cluster on 18 May. Case 63336 is a 22 year-old female Singaporean who works at Invade Industry Pte Ltd. She was confirmed to have COVID-19 infection on 16 May.
- xlv. 4 of the confirmed cases (Cases 63166, 63241, 63280 and 63365) are linked to the WOK HEY cluster, with the most recent case (Case 63365) linked to the cluster on 17 May. Case

63166 is a 22 year-old male Singaporean who works as a cook at WOK HEY (White Sands). He was confirmed to have COVID-19 infection on 13 May.

- xlvi. 3 of the confirmed cases (Cases 62969, 63083 and 63092) are linked to the Grab cluster, with the most recent case (Case 63092) linked to the cluster on 11 May. Case 62969 is a 38 year-old male Singaporean who works as a private hire car driver with Grab. He was confirmed to have COVID-19 infection on 8 May.



## Summary of Cases in the Community

	Case Number	Date of Confirmation	Onset date	Age (years)	Gender	Nationality	Exposure	Key Places Visited after Symptoms Onset/ Swab (for asymptomatic cases)	Links/ Cluster
*	64107	7 Jun	Asymptomatic	54	M	PR	Local unlinked		
#	64108	7 Jun	Asymptomatic	56	M	PR	Local linked		MINDSville@Napiri cluster
*	64112	7 Jun	5 Jun	35	F	Malaysia	Local unlinked		

Cases marked (#) had already been quarantined earlier.

Cases marked (\*) were detected as a result of our proactive screening and surveillance.

## Summary of Imported Cases

	Case Number	Date of Confirmation	Onset date	Age (years)	Gender	Nationality	Travel History	Exposure	Links	Cluster
~	64104	7 Jun	Asymptomatic	28	F	PR	India	Imported		
~	64106	7 Jun (Serology Positive)	Asymptomatic	78	M	Indonesia (Short-Term Visit Pass holder)	Indonesia	Imported	Contact of Case 63659	
~	64109	7 Jun (Serology Positive)	Asymptomatic	26	F	Indonesia (Work Permit holder)	Indonesia	Imported	Contact of Case 64017	
~	64110	7 Jun	Asymptomatic	16	F	PR	India	Imported		
~	64111	7 Jun	Asymptomatic	31	F	Philippines (Work Permit holder)	Philippines	Imported		

Cases marked (~) had already been placed on Stay-Home Notice upon arrival in Singapore.

Public Places Visited by Cases in the Community during Infectious Period<sup>3</sup>

Date	Time	Location (Address)
25 to 28 May	0600h to 1900h	Food Hub (455 Sengkang West Avenue)
25 to 29 May	1000h to 2200h	Hougang Green Shopping Mall (21 Hougang Street 51) <ul style="list-style-type: none"> <li>Fu Fa Food Court</li> </ul>
25 May	0920h to 1000h	Sheng Siong Supermarket (108 McNair Road)
25 May	1230h to 1430h	Beauty World Centre (144 Upper Bukit Timah Road) <ul style="list-style-type: none"> <li>Beauty World Thai Massage</li> </ul>
25 May	1500h to 1550h	Tradehub 21 (18 Boon Lay Way) <ul style="list-style-type: none"> <li>Rodalink Jurong East Bicycle Megastore</li> </ul>
25 May	1535h to 1630h	Sheng Siong Supermarket (455 Sengkang West Avenue)
25 May	1935h to 2010h	Greenridge Shopping Centre (524A Jelapang Road) <ul style="list-style-type: none"> <li>Giant Supermarket</li> </ul>
25 May	1800h to 1900h	Al Barakah Health and Beauty Mart (302 Woodlands Street 31)
26 to 27 May	0900h to 1700h	Sri Murugan Trading Pte Ltd (308 Anchorvale Road)
26 May	0900h to 2100h	NTUC Foodfare (308 Anchorvale Road)
26 May	0905h to 1200h	McDonald's (293 Yishun Street 22)
26 May	1040h to 1140h	Marsiling Lane Food Centre (20 Marsiling Lane)
26 May	1130h to 2100h	Tiong Bahru Plaza (298 Tiong Bahru Road) <ul style="list-style-type: none"> <li>328 Katong Laksa</li> </ul>
26 May	1320h to 1530h	NTUC FairPrice (301 Yishun Avenue 2)
26 May	1355h to 1700h	VivoCity (1 HarbourFront Walk)
26 May	1400h to 1430h	New Trendy Salon LLP (84 Redhill Lane)
26 May	1430h to 1500h	One Commonwealth (1 Commonwealth Lane) <ul style="list-style-type: none"> <li>Passion Bike</li> </ul>
26 May	1430h to 1535h	NTUC FairPrice (301 Yishun Avenue 2)
26 May	1710h to 1740h	Giant (256 Bangkit Road)
26 May	1850h to 2025h	Decathlon – Singapore Lab (230 Stadium Boulevard)
26 May	2100h to 2130h	Wenxintang Spa (316B Ang Mo Kio Street 31)
26 May	2115h to 2220h	People's Park Centre (101 Upper Cross Street)
27 May	0000h to 0730h	NTUC Foodfare (308 Anchorvale Road)

<sup>3</sup> Excludes residence, workplaces, healthcare facilities and public transport. This list will be updated on a rolling 14-days basis, i.e. one incubation period, and as epidemiological investigations progress.

Date	Time	Location (Address)
27 to 31 May	0000h to 2359h	Tuas Amenity Centre (71 Pioneer Road)
27 to 28 May	0600h to 2100h	NTUC Foodfare (308 Anchorvale Road)
27 to 28 May	0630h to 2200h	Hougang Green Shopping Mall (21 Hougang Street 51) <ul style="list-style-type: none"> <li>Fu Fa Food Court</li> </ul>
27 May	0750h to 0820h	Sheng Siong Supermarket (417 Fernvale Link)
27 May	0900h to 2100h	NTUC Foodfare (308 Anchorvale Road)
27 May	0905h to 1030h	Bukit Merah Community Centre (4000 Jalan Bukit Merah)
27 May	0915h to 1400h	LeVel 33 (8 Marina Boulevard)
27 May	0945h to 1100h	Jurong Port Pass/ Permit Office (37 Jurong Port Road)
27 May	1100h to 2230h	Chop Joo Hiong Eating House (237 Serangoon Avenue 3)
27 May	1125h to 1210h	United Square Shopping Mall (101 Thomson Road)
27 May	1125h to 2035h	Tiong Bahru Plaza (298 Tiong Bahru Road) <ul style="list-style-type: none"> <li>328 Katong Laksa</li> </ul>
27 May	1240h to 1345h	NTUC FairPrice (50 Havelock Road)
27 May	1400h to 2200h	Atatcutz Singapore (348 Bedok Road)
27 May	1605h to 1810h	Health Management Centre (809 French Road)
27 May	1700h to 1730h	Sheng Siong Supermarket (200 Woodlands Industrial Park E7)
27 May	1725h to 1825h	GP Motoring (282 Macpherson Road)
27 May	1755h to 2030h	Lucky Plaza (304 Orchard Road)
27 May	2230h to 2300h	Atatcutz Singapore (348 Bedok Road)
28 May	0800h to 1800h	Orchard Hotel Singapore (442 Orchard Road)
28 May	0900h to 2100h	NTUC Foodfare (308 Anchorvale Road)
28 May	1010h to 1155h	Carole Unisex Salon (620 Hougang Avenue 8)
28 May	1100h to 2200h	Hougang Green Shopping Mall (21 Hougang Street 51) <ul style="list-style-type: none"> <li>Pizza Hut</li> </ul>
28 to 31 May	1200h to 1900h	Atatcutz Singapore (348 Bedok Road)
28 May	1300h to 1340h	Masjid Jamek Queenstown (946 Margaret Drive)
28 May	1505h to 1540h	Fajar Shopping Centre (445 Fajar Road) <ul style="list-style-type: none"> <li>Giant Supermarket</li> </ul>
28 May	1615h to 1650h	Sheng Siong Supermarket (455 Sengkang West Avenue)
28 May	1830h to 2000h	Causeway Point (1 Woodlands Square)
28 May	1845h to 1935h	Causeway Point (1 Woodlands Square) <ul style="list-style-type: none"> <li>POPULAR Bookstore</li> </ul>
28 May	1930h to 0000h	NTUC Foodfare (308 Anchorvale Road)

<b>Date</b>	<b>Time</b>	<b>Location (Address)</b>
28 May	1955h to 2055h	Seletar Mall (33 Sengkang West Avenue) • NTUC FairPrice
28 May	2015h to 2120h	Woodlands Civic Centre (900 South Woodlands Drive) • NTUC FairPrice
29 May	0000h to 0730h	NTUC Foodfare (308 Anchorvale Road)
29 May	0110h to 0530h	Marina Bay Sands Casino (10 Bayfront Avenue)
29 May	0600h to 1300h	NTUC Foodfare (308 Anchorvale Road)
29 May	0630h to 1300h	Hougang Green Shopping Mall (21 Hougang Street 51) • Fu Fa Food Court
29 May	0900h to 1300h	NTUC Foodfare (308 Anchorvale Road)
29 May	1020h to 1100h	The Seletar Mall (33 Sengkang West Avenue)
29 May	1040h to 1140h	Marsiling Lane Food Centre (20 Marsiling Lane)
29 May	1315h to 1500h	Chien Chi Tow Healthcare (78 Redhill Lane)
29 May	1555h to 1645h	Peninsula Plaza Singapore (111 North Bridge Road)
29 May	1815h to 1915h	Thong Sheng Motors Trading (7 Pioneer Road North)
29 May	1820h to 2000h	VivoCity (1 HarbourFront Walk) • FairPrice Xtra
29 May	1840h to 1950h	ESR BizPark@Chai Chee (750A Chai Chee Road) • Decathlon
29 to 30 May	1930h to 0000h	NTUC Foodfare (308 Anchorvale Road)
29 May	2000h to 2035h	Prime Supermarket (763 Jurong West Street 75)
29 May	2030h to 2055h	Plaza Singapura (68 Orchard Road) • Cold Storage
29 May	2030h to 2115h	Plaza Singapura (68 Orchard Road)
30 May	1100h to 2200h	Hougang Green Shopping Mall (21 Hougang Street 51) • Pizza Hut
30 May	1125h to 1200h	Ang Mo Supermarket (642 Hougang Avenue 8)
30 May	1200h to 1300h	Bugis Street (3 New Bugis Street)
30 May	1550h to 1650h	Choa Chu Kang Columbarium (51 Chinese Cemetery Path 4)
30 May	1800h to 1900h	Hong Yang Health Products & Foot Reflexology Centre (38 Beo Crescent)
30 to 31 May	2005h to 0005h	Marina Bay Sands Casino (10 Bayfront Avenue)
31 May	1940h to 2010h	Sheng Siong Supermarket (446A Fajar Road)
1 Jun	0735h to 0810h	Sheng Siong Supermarket (446A Fajar Road)
1 Jun	1000h to 1230h	JIC Inspection Services (53 Pioneer Road)

Date	Time	Location (Address)
1 Jun	1100h to 1230h	VICOM Inspection Centre (511 Bukit Batok Street 2)
1 Jun	1955h to 2030h	Seletar Mall (33 Sengkang West Avenue) <ul style="list-style-type: none"> <li>• NTUC FairPrice</li> </ul>
3 Jun	0900h to 1600h	ION Orchard (2 Orchard Turn) <ul style="list-style-type: none"> <li>• Four Leaves</li> </ul>
3 Jun	1645h to 1720h	People's Park Complex (1 Park Road) <ul style="list-style-type: none"> <li>• Scarlett Supermarket</li> </ul>
4 Jun	1300h to 2130h	ION Orchard (2 Orchard Turn) <ul style="list-style-type: none"> <li>• Four Leaves</li> </ul>
5 Jun	0900h to 2130h	ION Orchard (2 Orchard Turn) <ul style="list-style-type: none"> <li>• Four Leaves</li> </ul>
6 Jun	1300h to 2130h	ION Orchard (2 Orchard Turn) <ul style="list-style-type: none"> <li>• Four Leaves</li> </ul>
6 Jun	1000h to 1100h	The Centrepoint (176 Orchard Road) <ul style="list-style-type: none"> <li>• Decathlon</li> </ul>
6 Jun	1100h to 1145h	Orchard Central (181 Orchard Road) <ul style="list-style-type: none"> <li>• UNIQLO</li> </ul>

Those who had been identified as close contacts of confirmed cases would already have been notified by MOH.

As a precautionary measure, persons who had been at these locations during the specified timings should monitor their health closely for 14 days from their date of visit. They should see a doctor promptly if they develop symptoms of acute respiratory infection (such as cough, sore throat and runny nose), as well as fever and loss of taste or smell, and inform the doctor of their exposure history.

Individuals may access the SafeEntry Location Matching Self-Check service via the TraceTogether App or at <https://wereyouthere.safeentry.gov.sg> to check whether they were at these locations during the specified timings, based on their own SafeEntry records.

There is no need to avoid places where confirmed cases of COVID-19 have been. The National Environment Agency will engage the management of affected premises to provide guidance on cleaning and disinfection.