



Ministry of Health Committee of Supply 2021 Initiatives

***Emerging Stronger Together  
Building for the Future***



# STRIVING FOR BETTER HEALTH FOR ALL

## Promoting child and maternal health and well-being

- New **Child and Maternal Health and Well-being Strategy** to provide holistic support to women and their children across the age spectrum
- Interagency taskforce to oversee the development and implementation of a **5-year Strategy and Action Plan** to:
  - Enhance preventive health efforts for women and children
  - Tighten integration of social and health services across agencies
  - Better design and deliver health services



## Targeted approach to enhance health of ethnic minority groups

- **New workgroup** to improve the health of ethnic minority groups will:
  - Design culturally relevant programmes for healthy living
  - For a start, to focus efforts on Malay community, before expanding to other groups



## Strengthening mental health efforts

- **COVID-19 Mental Wellness Taskforce** set up by MOH and Institute of Mental Health to look into psychosocial impact of COVID-19 and better address mental health needs
- Taskforce will transit into an inter-agency platform by mid-2021 to oversee the development and implementation of mental health and well-being efforts



## Refreshed Action Plan for Successful Ageing to launch in 2022

- **Care, Contribution and Connectedness:** Improve seniors' quality of life, empower them to continue contributing, and support them in staying connected to the community
- Singaporeans from all walks of life to co-create an empowering society for our seniors



## "ABC" suite of services at eldercare centres from May 2021

- **Active Ageing Centres:** Seniors can participate in **A**ctive Ageing programmes, receive **B**efriending services and referral to **C**are services
- **Active Ageing Care Hubs:** Provide additional care services for frail seniors, e.g. day care, community rehabilitation services



# PROVIDING ACCESSIBLE, AFFORDABLE AND BETTER CARE

## Expanded network of 32 polyclinics in all by 2030

- **By end 2021:** Bukit Panjang, Eunos and Kallang Polyclinics
- **By 2022:** Sembawang Polyclinic
- **By 2026:** 6 new polyclinics in Kaki Bukit, Khatib, Serangoon, Tampines North, Tengah and Yew Tee scheduled to be completed
- **By 2030:** 2 new polyclinics in Bidadari and Bishan scheduled to be completed
- **Clementi Polyclinic** will be redeveloped by 2027

## Upcoming acute and community hospitals

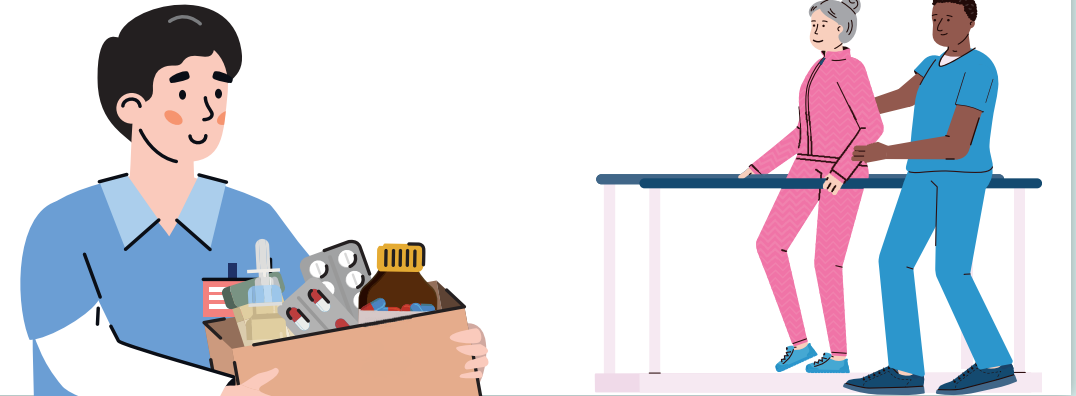
- **By around 2030:** 12 acute hospitals and 8 community hospitals in all
  - Woodlands Health Campus and Tan Tock Seng Hospital Integrated Care Hub at Novena from 2023
  - New integrated general and community hospital in Bedok North by 2030

## Institute of Mental Health Buangkok Campus ward refurbishment

- **By end 2022:**
  - New short stay unit, rehabilitative wards
  - Upgraded acute psychiatric, addiction medicine, child and adolescent psychiatry wards for patients with different care needs

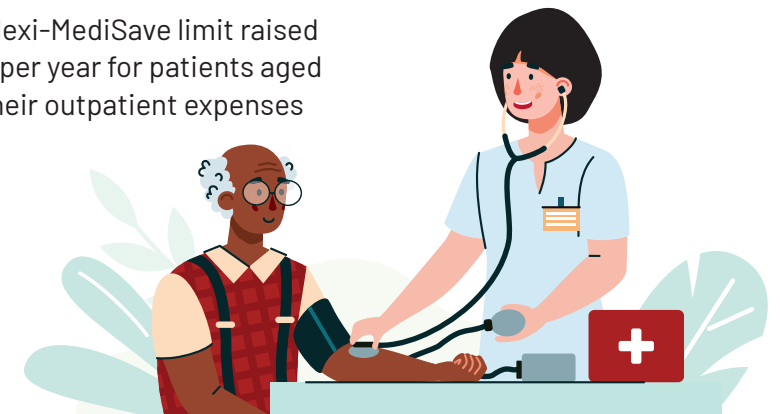
## Transforming Care Models for Better Care

- **New National Central Fill Pharmacies** to consolidate medication orders across multiple providers to be conveniently delivered as a single parcel to patients
- **National One-Rehab framework** to facilitate patients' timely access to appropriate types of rehabilitation care



## Enhancing Flexi-MediSave to better support elderly patients

- **From 1 Jun 2021:** Flexi-MediSave limit raised from \$200 to \$300 per year for patients aged 60 and above, for their outpatient expenses



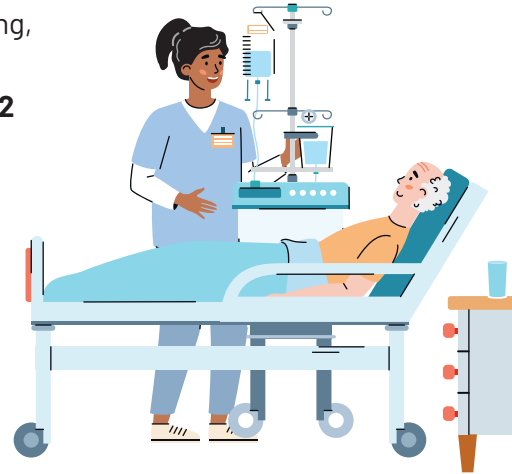
## Targeting healthcare subsidies to better assist those in need

We are making changes to means-tested subsidy frameworks to ensure our subsidies are better targeted towards those who need them more.

### From mid-2022:

#### ● At acute hospitals:

- **Per capita household income (PCHI)** used for means-testing in acute inpatient setting, aligned across all healthcare settings
- **Single common subsidy framework for B2 and C wards** at 50% to 80%
- About 30% of patient bills mainly from households with lower PCHI will see a median decrease in their out-of-pocket payments by about \$150



#### ● At community hospitals:

- **Maximum subsidy level raised to 80%**, minimum subsidy level raised to 30%
- 95% of sub-acute and rehabilitation patients expected to benefit from higher subsidies

#### ● At Specialist Outpatient Clinics:

- Private patients in inpatient setting can choose subsidised follow-up care at SOC, based on the means testing framework
- To allow resources to be distributed to those in greater need, higher income households will see a reduction in subsidies from 50% to 40% or 30%



## ENABLING A FUTURE-READY HEALTHCARE SYSTEM



### Uplifting the healthcare workforce

- **Increasing training capacity under Professional Conversion Programme (PCP)** to enable more mid-careerists to join healthcare
- **Accelerated PCP in Occupational Therapy** to allow eligible mid-careerists to complete training in shorter period
- **Increase in monthly base salaries** for nurses, allied health professionals, pharmacists, and administrative and ancillary staff in public healthcare and publicly-funded community care sectors, from Jul 2021
- **Redesign healthcare and operations support roles** to provide broader options for staff's further development





**MINISTRY OF HEALTH**  
SINGAPORE

March 2021 | All information in this booklet is accurate at the time of printing.