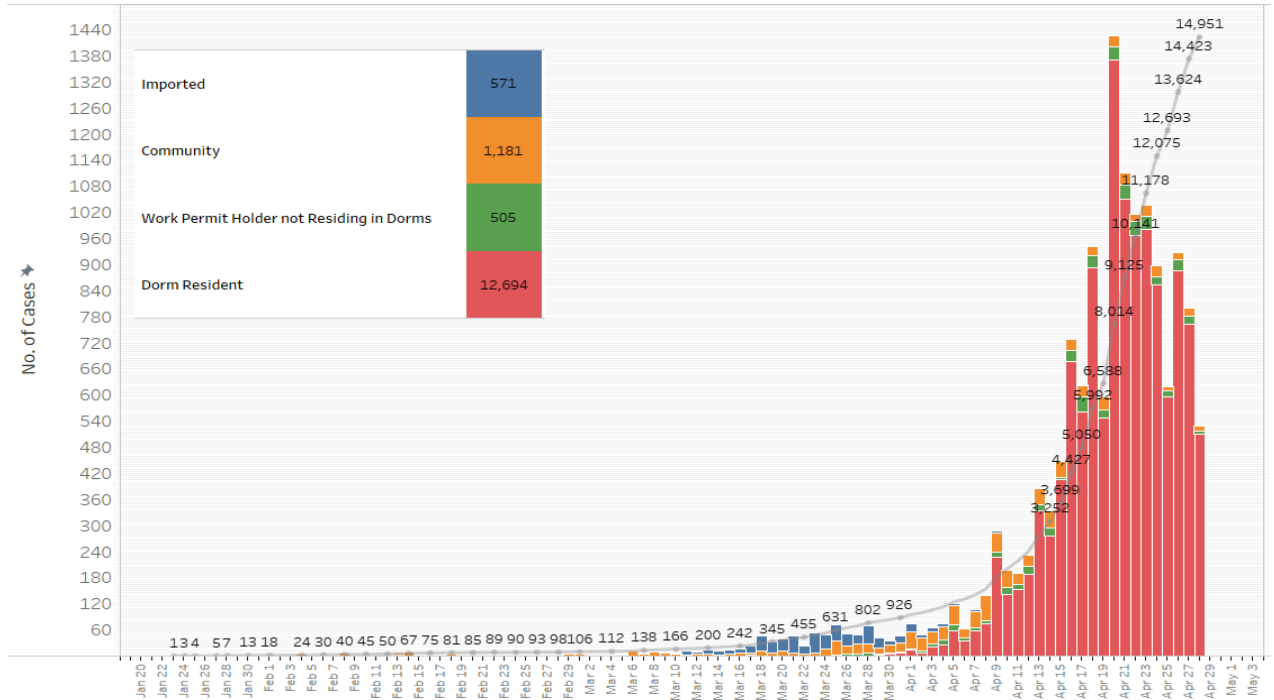


**28 April 2020 Daily Report on COVID-19****(1) Number of COVID-19 Cases****Figure 1.1:** Number of Cases Reported over the Past 14 Days

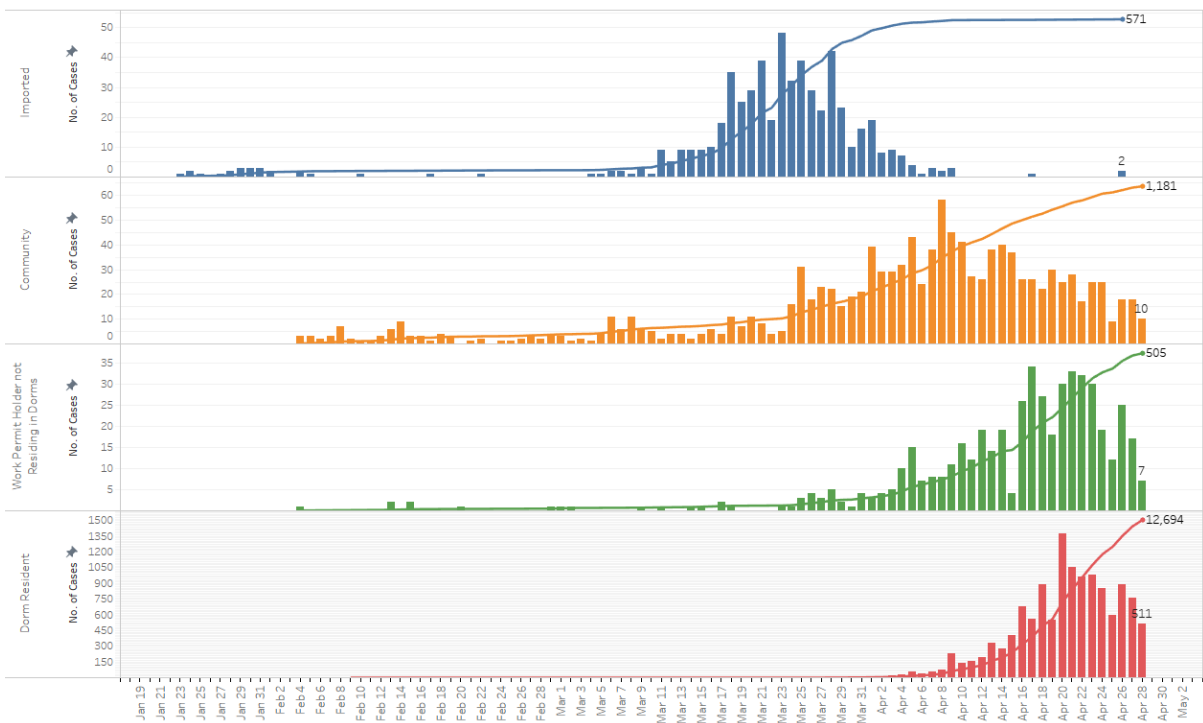
Press Release Date	Imported	Non-Imported Cases																Total Cases
		Community Cases (residents & pass holders excluding work permit holders and dorm residents)										Work permit holders not residing in dorms			Dorm Residents			
		Linked Cases				Unlinked Cases <sup>1</sup>				Sub-Total	Incidence Rate (per 100,000)	Linked Cases	Unlinked Cases <sup>2</sup>	Sub-Total	Incidence Rate (per 100,000)	No. of Cases	Incidence Rate (per 100,000)	
		SC/SPR	G or F	Visitor	Sub-Total	SC/SPR	G or F	Visitor	Sub-Total									
Before 15-Apr	568	462	61	2	525	308	28	4	340	865	-	126	65	191	-	1,628	-	3,252
15-Apr	0	11	2	0	13	19	5	0	24	37	0.78	2	2	4	0.60	406	130	447
16-Apr	0	6	3	0	9	16	1	0	17	26	0.55	17	9	26	3.9	676	210	728
17-Apr	1	6	0	0	6	16	3	1	20	26	0.55	24	10	34	5.1	562	170	623
18-Apr	0	3	1	0	4	11	7	0	18	22	0.47	22	5	27	4.1	893	280	942
19-Apr	0	12	2	0	14	13	3	0	16	30	0.64	12	6	18	2.7	548	170	596
20-Apr	0	9	4	0	13	9	3	0	12	25	0.53	18	12	30	4.5	1,371	420	1,426
21-Apr	0	2	5	0	7	18	3	0	21	28	0.59	17	16	33	5.0	1,050	330	1,111
22-Apr	0	3	1	0	4	12	1	0	13	17	0.36	23	9	32	4.8	967	300	1,016
23-Apr	0	4	3	0	7	18	0	0	18	25	0.53	23	7	30	4.5	982	300	1,037
24-Apr	0	2	8	0	10	11	4	0	15	25	0.53	11	8	19	2.9	853	260	897
25-Apr	0	2	1	0	3	5	1	0	6	9	0.19	7	5	12	1.8	597	180	618
26-Apr	2	6	2	0	8	7	3	0	10	18	0.38	14	11	25	3.8	886	270	931
27-Apr	0	12	2	0	14	2	2	0	4	18	0.38	8	9	17	2.6	764	240	799
28-Apr	0	1	2	1	4	6	0	0	6	10	0.21	4	3	7	1.1	511	160	528
Total since start of outbreak	571	541	97	3	641	471	64	5	540	1,181	-	328	177	505	-	12,694	-	14,951
Population at risk <sup>3</sup>										4,717,000				664,000		323,000		5,704,000
Prevalence										0.03%				0.08%		3.93%		0.26%

<sup>1</sup> Includes cases pending epi-investigation.<sup>2</sup> Includes cases pending epi-investigation.<sup>3</sup> Population at risk for community cases includes SC/PRs and other types of passes holders not residing in dormitories. Source: MOM and Singstat.

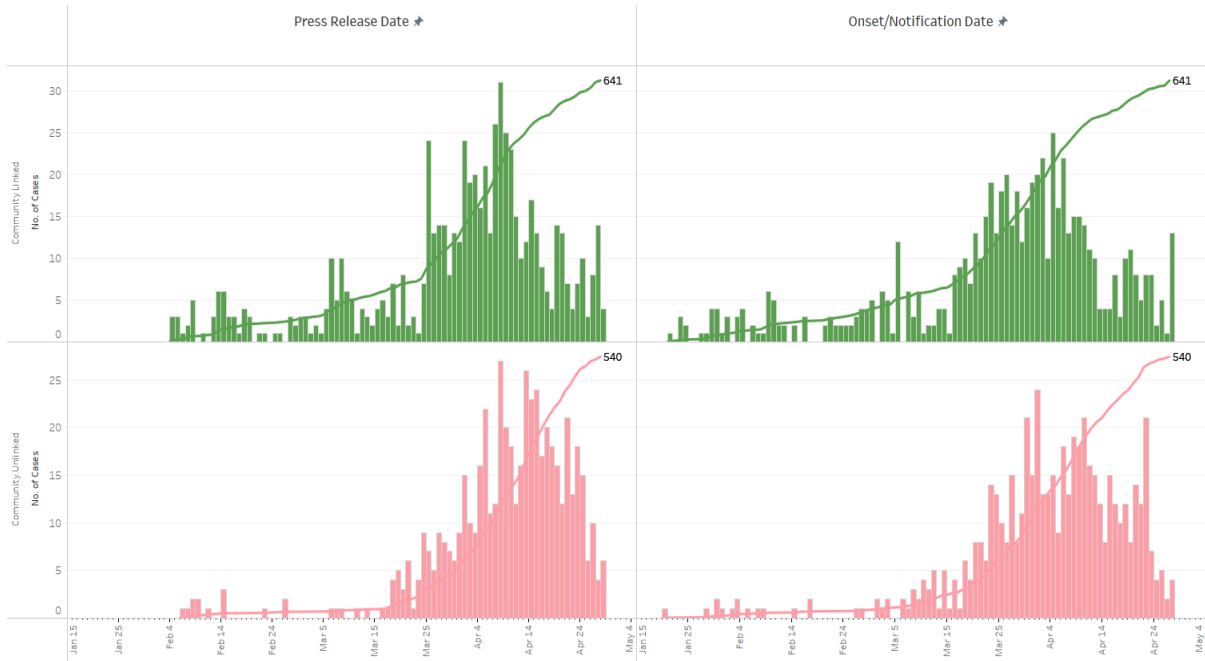
**Figure 1.2:** Epidemic Curve of the COVID-19 Outbreak by Press Release Date



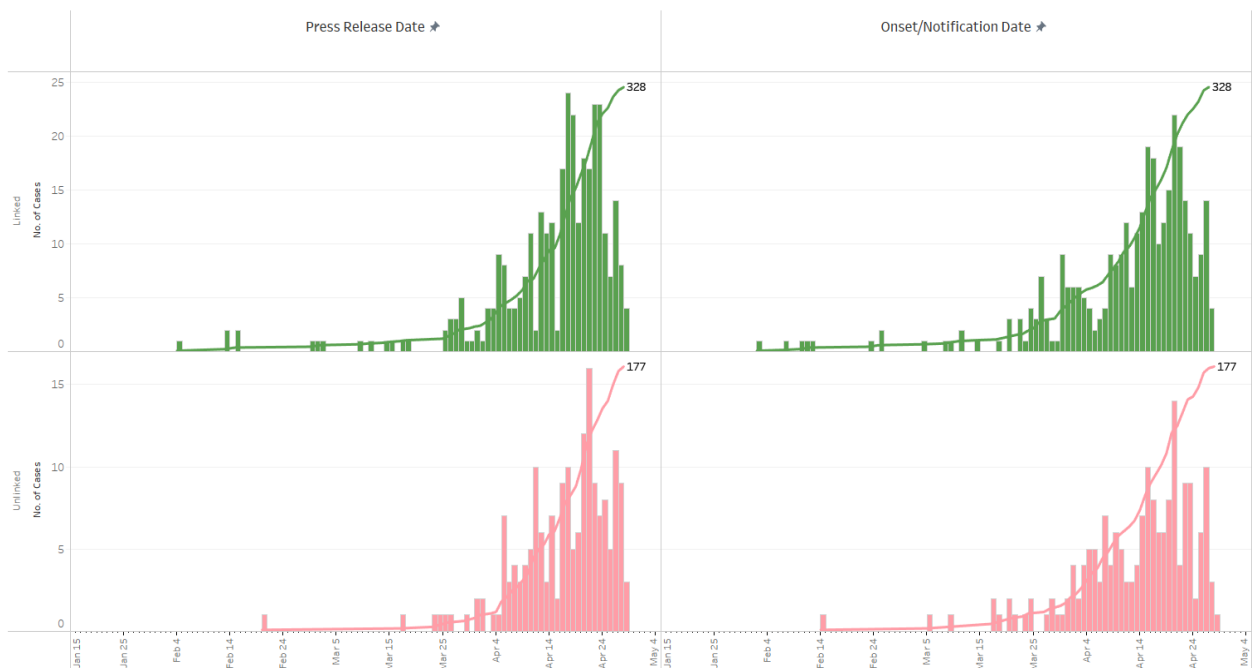
**Figure 1.3:** Epidemic Curve of the COVID-19 Outbreak by Press Release Date



**Figure 1.4:** Epidemic Curve of Linked and Unlinked Cases among the Community by Press Release Date (left panel) and by Symptom Onset or Notification Date<sup>4</sup> (right panel)



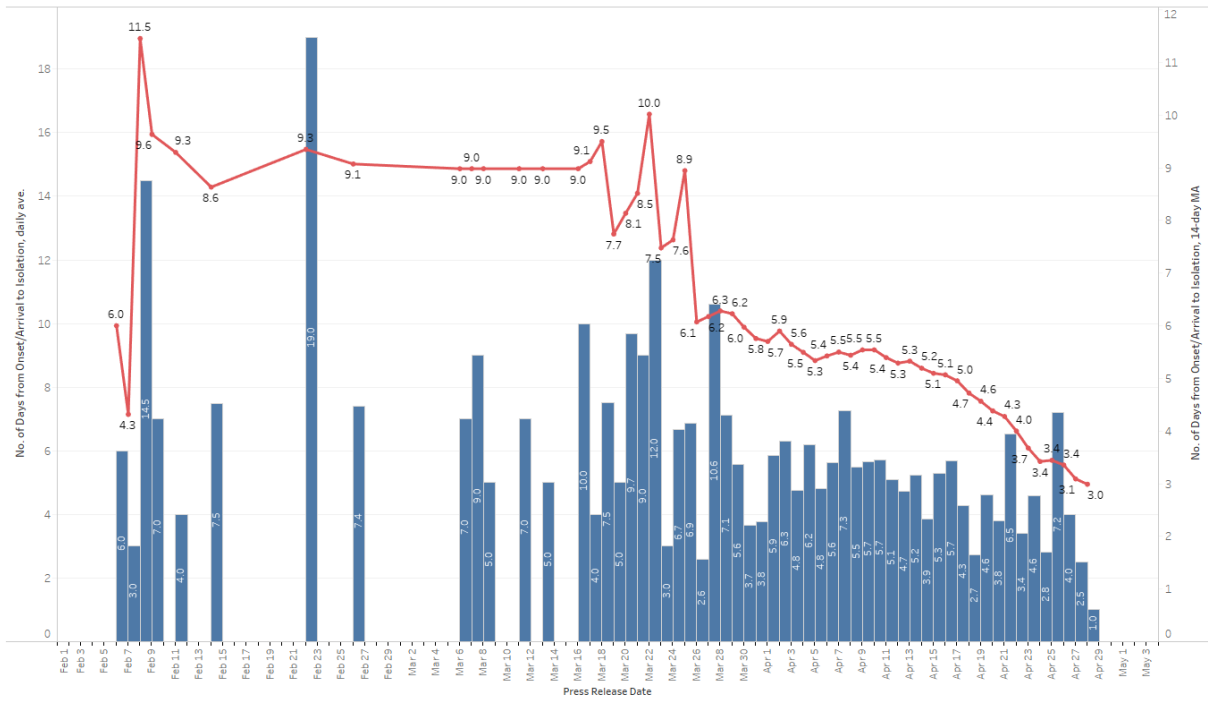
**Figure 1.5:** Epidemic Curve of Linked and Unlinked Cases among Work Permit Holders not Residing in Dorms by Press Release Date (left panel) and by Symptom Onset or Notification Date<sup>5</sup> (right panel)



<sup>4</sup> Date of notification was used for cases that did not display any symptoms. The numbers with onset in the past few days may see an increase as more cases are notified.

<sup>5</sup> Date of notification was used for cases that did not display any symptoms. The numbers with onset in the past few days may see an increase as more cases are notified.

**Figure 1.6:** Average Number of Days from Onset of Symptoms to Isolation for Community Unlinked Cases in Each Day (by Press Release Date)



Line represents the 14-day moving average, Bar represents the daily average.

**(2) Number of COVID-19 Cases in Hospitals and Community Care Facilities**

**Figure 2.1:** Summary of Confirmed Cases by Status in the Past 14 Days

Press Release Date	Currently Admitted in Hospitals		In Care Facilities <sup>6</sup>	Recovered		Demised	Total
	ICU	General Wards		Completed Isolation	Discharged from Hospital <sup>7</sup>		
15-Apr	26	1,473	1,541	284	365	10	<b>3,699</b>
16-Apr	23	1,866	1,848	309	371	10	<b>4,427</b>
17-Apr	22	2,095	2,219	312	391	11	<b>5,050</b>
18-Apr	23	2,538	2,683	331	406	11	<b>5,992</b>
19-Apr	22	2,899	2,893	339	424	11	<b>6,588</b>
After reclassification <sup>8</sup>							
20-Apr	23	1,364	5,829	351	436	11	<b>8,014</b>
21-Apr	27	1,381	6,881	371	454	11	<b>9,125</b>
22-Apr	25	1,571	7,651	413	469	12	<b>10,141</b>
23-Apr	26	1,342	8,880	434	484	12	<b>11,178</b>
24-Apr	24	1,205	9,878	449	507	12	<b>12,075</b>
25-Apr	24	1,190	10,465	475	527	12	<b>12,693</b>
26-Apr	22	1,289	11,241	514	546	12	<b>13,624</b>
27-Apr	20	1,431	11,863	532	563	14	<b>14,423</b>
28-Apr	21	1,868	11,920	551	577	14	<b>14,951</b>

<sup>6</sup> Community Care Facilities (i.e. D'Resort, EXPO, Changi Exhibition Centre), Private Hospitals (i.e. Concord International Hospital, Mt Elizabeth Hospital, Gleneagles Hospital, Mt Alvernia Hospital, Mt Elizabeth Novena Hospital, Parkway East Hospital, Farrer Park Hospital), Community Hospitals (i.e. Bright Vision Hospital, St. Andrew's Community Hospital, Yishun Community Hospital, Jurong Community Hospital) and other care facilities.

<sup>7</sup> Figures have been adjusted to reflect the correct number of discharged cases.

<sup>8</sup> As our care protocols adapt based on our understanding of the disease, we have undertaken a recategorisation exercise of the confirmed cases to more accurately reflect where the confirmed cases are being cared for, with effect from 20 Apr data.

(3) Number of Stay-Home-Notice (SHN) Issued

Figure 3.1: Daily Number of SHN issued

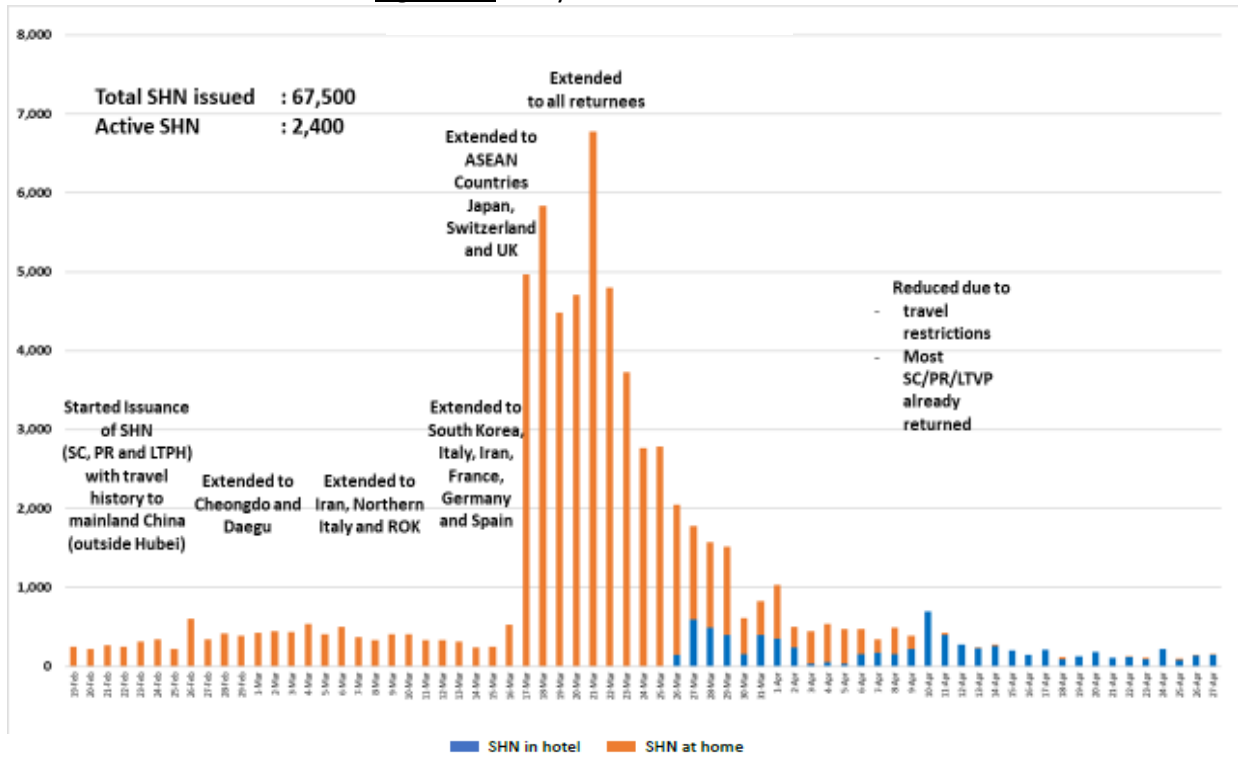
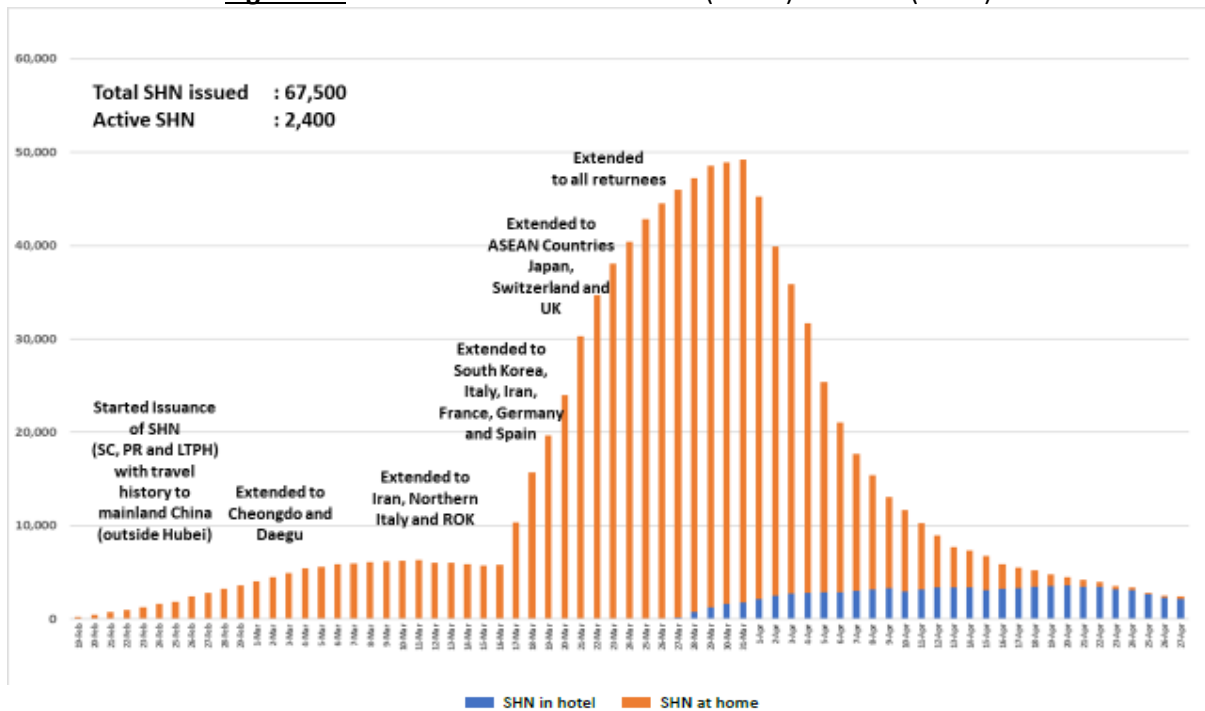
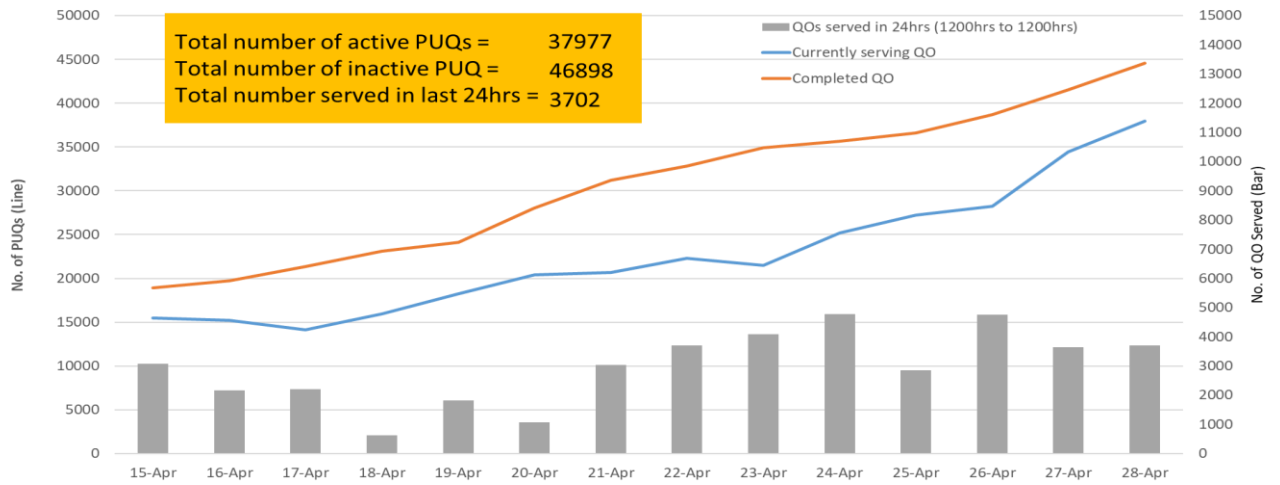


Figure 3.2: Active Stock Number of SHN (Home) and SHN (Hotel)

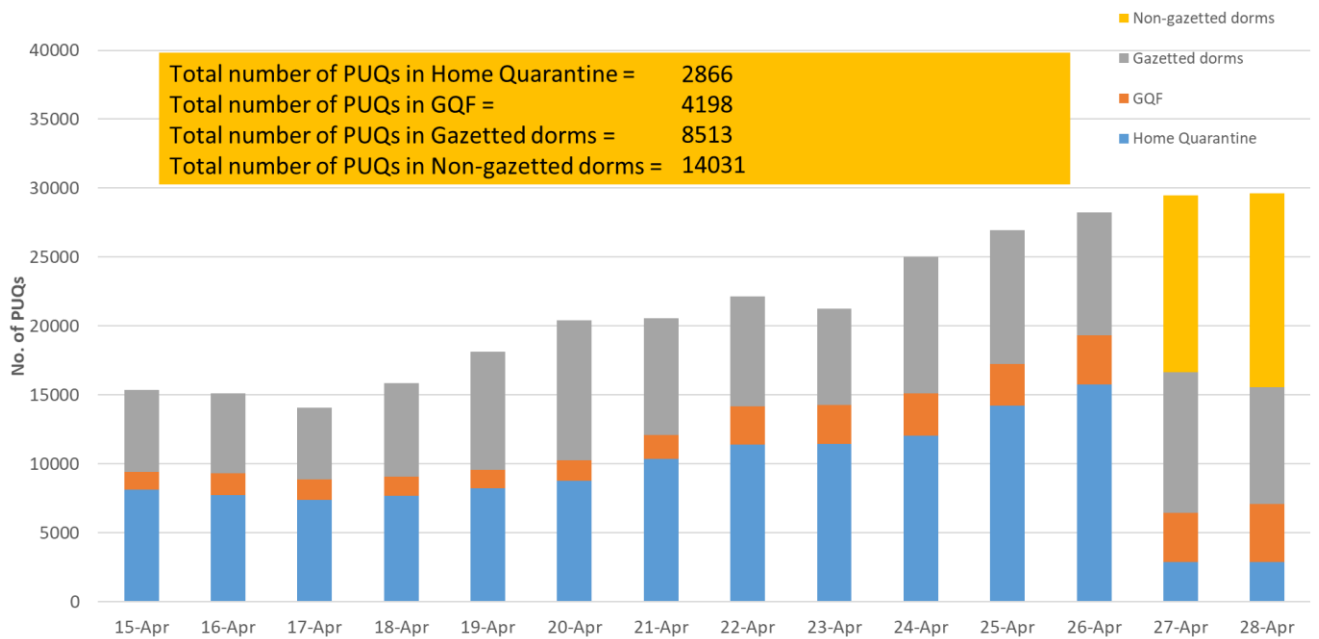


**(4) Number of Quarantine Order (QO) Issued**

**Figure 4.1:** Total and Daily Number of QOs Issued



**Figure 4.2:** Active Number of Persons Under Quarantine (PUQs)<sup>9</sup>



GQF = Government Quarantine Facility

<sup>9</sup> Excludes PUQs admitted to hospitals and pending update on quarantine locations.